

MediaMatrix®

A Division of Peavey Electronics Corporation



VSC-101tn Quick Set-Up Guide

Version 2.0.0.0

July 7, 2017

Copyright notice

The information contained in this manual is subject to change without notice. Peavey Electronics is not liable for improper installation or configuration. The information contained herein is intended only as an aid to qualified personnel in the design, installation and maintenance of engineered audio systems. The installing contractor or end user is ultimately responsible for the successful implementation of these systems.

All creative content in this manual, including the layout, art design, content, photography, drawings, specifications and all other intellectual property is Copyright © 2016 Peavey Electronics Corporation. All Rights Reserved. Features & specifications subject to change without notice. All other registered trademarks or trademarks are the property of their respective owners.

Email: mmtechsupport@peavey.com (*mailto:mmtechsupport@peavey.com*).

Scope

This guide describes how to configure a VSC-101tn Video Scaler-Switcher with basic settings.

1 - Important safety instructions

Warning: When using electrical products, basic cautions should always be followed, including the following:

1. Read these instructions.
2. Keep these instructions.
3. Heed all warnings.
4. Follow all instructions.
5. Do not use this apparatus near water.
6. Clean only with a dry cloth.
7. Do not block any of the ventilation openings. Install in accordance with manufacturer's instructions.
8. Do not install near any heat sources such as radiators, heat registers, stoves or other apparatus (including amplifiers) that produce heat.
9. Do not defeat the safety purpose of the polarized or grounding-type plug. A polarized plug has two blades with one wider than the other. A grounding type plug has two blades and a third grounding prong. The wide blade or third prong is provided for your safety. If the provided plug does not fit into your outlet, consult an electrician for replacement of the obsolete outlet.
10. Protect the power cord from being walked on or pinched, particularly at plugs, convenience receptacles, and the point they exit from the apparatus.
11. Only use attachments/accessories provided by the manufacturer.
12. Use only with a cart, stand, tripod, bracket, or table specified by the manufacturer, or sold with the apparatus. When a cart is used, use caution when moving the cart/apparatus combination to avoid injury from tip-over.
13. Unplug this apparatus during lightning storms or when unused for long periods of time.
14. Refer all servicing to qualified service personnel. Servicing is required when the apparatus has been damaged in any way, such as power-supply cord or plug is damaged, liquid has been spilled or objects have fallen into the apparatus, the apparatus has been exposed to rain or moisture, does not operate normally, or has been dropped.
15. Never break off the ground pin. Write for our free booklet *Shock Hazard and Grounding*. Connect only to a power supply of the type marked on the unit adjacent to the power supply cord.
16. If this product is to be mounted in an equipment rack, rear support should be provided.
17. Control panel devices, including the xControl range, D series and nTouch 60, are designed for mounting in NEMA metal enclosures. Grounding to the front plate is required.
18. **Note for UK only:** If the colors of the wires in the mains lead of this unit do not correspond with the terminals in your plug, proceed as follows:

- a) The wire that is colored green and yellow must be connected to the terminal that is marked by the letter E, the earth symbol,
 - b) colored green or colored green and yellow.
 - c) The wire that is colored blue must be connected to the terminal that is marked with the letter N or the color black.
 - d) The wire that is colored brown must be connected to the terminal that is marked with the letter L or the color red.
19. This electrical apparatus should not be exposed to dripping or splashing and care should be taken not to place objects containing liquids, such as vases, upon the apparatus.
20. The on/off switch in this unit does not break both sides of the primary mains. Hazardous energy can be present inside the chassis when the on/off switch is in the off position. The mains plug or appliance coupler is used as the disconnect device, the disconnect device shall remain readily operable.
21. Exposure to extremely high noise levels may cause a permanent hearing loss. Individuals vary considerably in susceptibility to noise-induced hearing loss, but nearly everyone will lose some hearing if exposed to sufficiently intense noise for a sufficient time. The U.S. Government's Occupational Safety and Health Administration (OSHA) has specified the following permissible noise level exposures:

Duration Per Day in Hours	Sound Level dBA, Slow Response
8	90
6	92
4	95
3	97
2	100
1½	102
1	105
½	110
¼ or less	115

According to OSHA, any exposure in excess of the above permissible limits could result in some hearing loss. Ear plugs or protectors to the ear canals or over the ears must be worn when operating this amplification system in order to prevent a permanent hearing loss, if exposure is in excess of the limits as set forth above. To ensure against potentially dangerous exposure to high sound pressure levels, it is recommended that all persons exposed to equipment capable of producing high sound pressure levels such as this amplification system be protected by hearing protectors while this unit is in operation.

SAVE THESE INSTRUCTIONS!

2 - Introduction

What is VSC-101tn?

VSC-101tn is a full HD video scaler switcher. The device scales and switches any HDMI, VGA, YPbPr, C-Video or S-video video signal to HDMI up to 1080P. It is controllable via buttons on the front, the IR sensor and the RS232 port. It has 12 video inputs and 10 audio inputs.

In addition, the VSC-101tn can be controlled via TCP/IP. The device also includes an HDBaseT output, and includes a VCAT-HD Receiver.

Features

- 12 video Inputs: 4 x HDMI, 4 x VGA, 1 x YPbPr, 2 x C-video & 1 x S-video.
- 2 independent audio inputs with level control and mixer function.
- 1 x HDMI output
- 1 x VGA (subject to HDCP) output
- Balanced left/right output pair on Euro-Connector.
- Built-in 2x10Watt@8Ω amplifier.
- Five selectable output resolutions.
- Adjustable display H/V size solves over-scale problems.
- Adjustable display H/V position.
- Mic volume and line volume adjustable.
- Powerful On-Screen Display (OSD) for control and setup functions.
- Quick switching through black.
- HDMI 1.3 and HDCP compliant.
- Firmware upgradeable via USB.
- Output freeze function.
- Front panel lockout.
- Controllable via front-panel, IR and RS-232.
- HDBaseT output.
- VCAT-HD Receiver for 70M shielded CAT6 transmission.
- Passes projector control strings via the VCAT-HD Receiver.
- TCP/IP control.

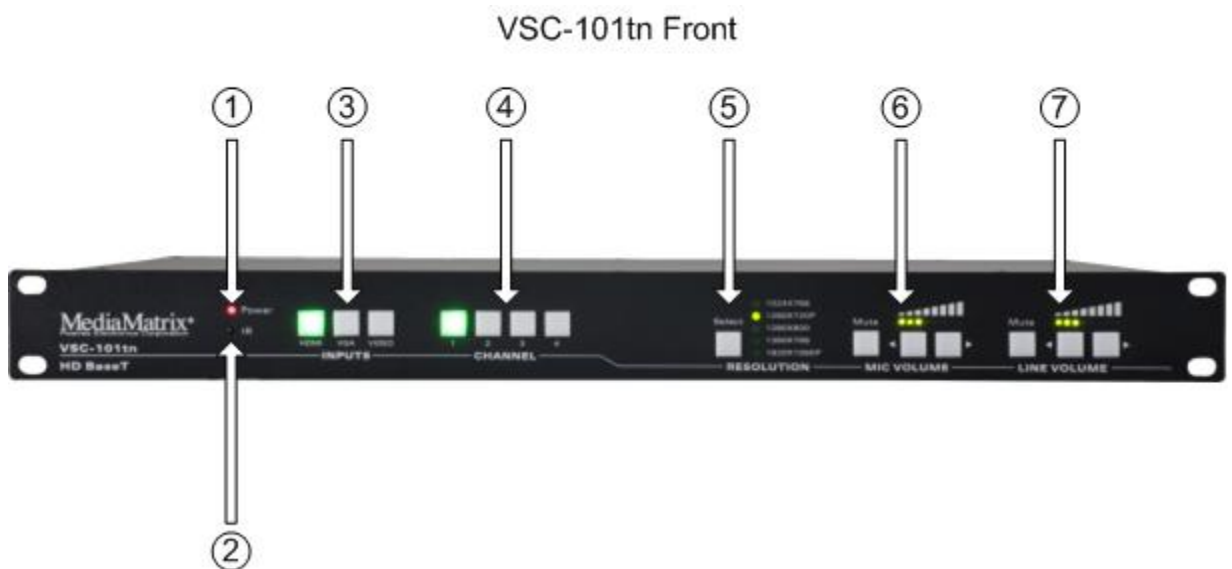
What's in the box?

VSC-101tn products are packaged in a single container. This container includes the following items:

- 1 x VSC-101tn
- 1 x Power Cord
- 1 x IR remote (Cell battery is not included)
- 4 x Captive screw connectors
- 4 x Plastic feet cushions (for use when mounted on a shelf)
- 1 x RS232 cable
- 1 x User Manual
- 1 x VCAT-HD Receiver (with 2 mounting ears & 4 screws)
- 1 x Power Adapter (DC 5V).

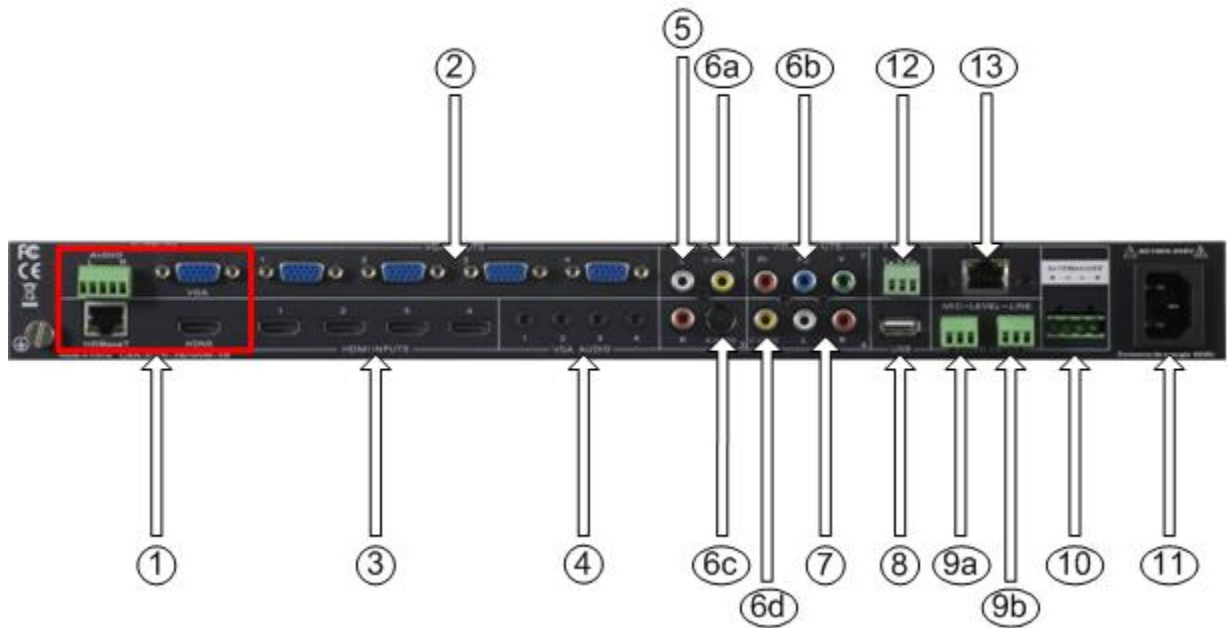
If any of these items is missing, please contact your Authorized Peavey MediaMatrix contractor/dealer.

VSC-101tn front and rear



1. **POWER:** Lit (red) when the external power supply is connected properly.
2. **IR (infrared) internal receiver.** For use with the remote control.
3. **Video input source selection buttons:** HDMI, VGA or analog video.
4. **Video source channel selection buttons.**
5. **Output resolution selection button.** Supported resolutions: 1024×768, 1280x720p, 1280×800, 1360×768, 1920×1080p.
6. **Non-switched audio input volume control buttons (both mic and line inputs).**
Mute for mic and stereo line inputs, arrow buttons for volume up and down.
7. **Line volume control buttons for controlling the levels of switched video inputs.**
Mute for switched video volume, arrow buttons for volume up and down.

VSC-101tn Rear






1. Output section.
5-pin Euro-connector for balanced stereo audio output, one VGA output, one HDMI output with embedded audio. One HDBaseT port for HDMI (works with the VCAT-HDR).
2. Four VGA input connectors.
3. Four HDMI input connectors.
4. Four 3.5mm stereo audio connectors for VGA audio inputs.
5. RCA stereo inputs. Shared audio inputs for video inputs #1 and #3.
6. Analog video inputs.
 - a) Input #1: composite video.
 - b) Input #2: component video (Y/Pb/Pr)
 - c) Input #3: S-Video
 - d) Input #4: composite video.
7. RCA stereo inputs. Shared audio inputs for video inputs #2 & #4.
8. USB port for firmware updates.
9. Non-Switched audio inputs.
 - a) Balanced mic level input.
 - b) Line level stereo input.
10. Amplifier with 2x10W@8Ω output.
11. Power connector.
12. RS232 port for serial control.
13. Ethernet port for telnet control.

Control string commands received via control ports are passed on through the HDBaseT output for control of far end video devices.

Infrared remote control



	<p>Video source select:</p> <ul style="list-style-type: none"> ▪ HDMI inputs 1,2,3,4. ▪ VGA inputs 1,2,3,4. ▪ Component video inputs: 1. Composite video, 2. Component video (YPbPr), 3. S-Video, 4. Composite video.
	<p>Menu and volume control area. Mute for line and mic audio inputs.</p>
	<p>Line volume control. This can be used when not in MENU mode.</p>

	<p>Direction buttons and OK button. These are only available in MENU mode.</p>
	<p>Mic volume control. This can be used when not in MENU mode.</p>
	<p>Output resolution select:</p> <ul style="list-style-type: none"> ▪ 720P (1280x720) ▪ 1080P (1920x1080) ▪ XGA (1024x768) ▪ WXGA (1280x800) ▪ HD (1360x768)

3 - Setting up the unit using the OSD

Introduction

The product provides an On-Screen Display (OSD) menu.

Note: Many of the features are used only during initial installation and setup.

Specifying the picture parameters



The first icon from the left of the OSD menu is used to set the picture parameters.




The settings include the picture mode presets, color temperature, contrast, brightness, hue, saturation, sharpness, scale, and Advance picture adjust. The Advance Picture Adjust is used to enable/disable the Digital Noise Reduction (DNR), Color Trend Increase (CTI), flesh tone and Adaptive Luma Control.

Note: Not all parameters are available with all inputs.

Specifying the audio parameters



The second icon from the left of the OSD menu  is used to set the audio parameters.



The settings include sound effect presets, bass, treble, balance, scene mode, surround and smart volume setting.

Note: Not all parameters are available with all inputs.

Specifying the system parameters



The third icon from the left of the OSD menu  is used to set the system parameters. These include the OSD language, Listen, output image freeze, VGA setting and output adjustment.

Language	Toggles between English and Chinese.
Listen	Audio output only. To resume video output, press the MENU button.
VGA setting	Adjust the H/V signal of VGA input, including auto adjustment.
Output adjustment	Adjust H/V size and H/V position of the output. This function is only available with HDMI and VGA inputs.

Note: Not all parameters are available with all inputs.

4 - Controlling the VSC-101tn via TCP/IP

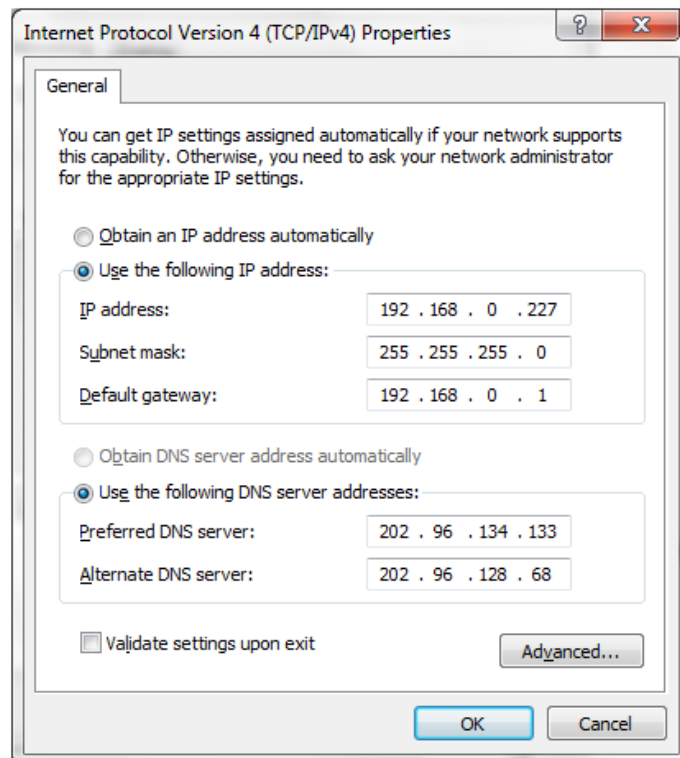
Introduction

You can control the VSC-101tn via the Ethernet port on the rear of the unit. The same commands can be used for control via the Ethernet port and the RS-232 port. For more information, see *Communication protocol and command codes* (on page 22).

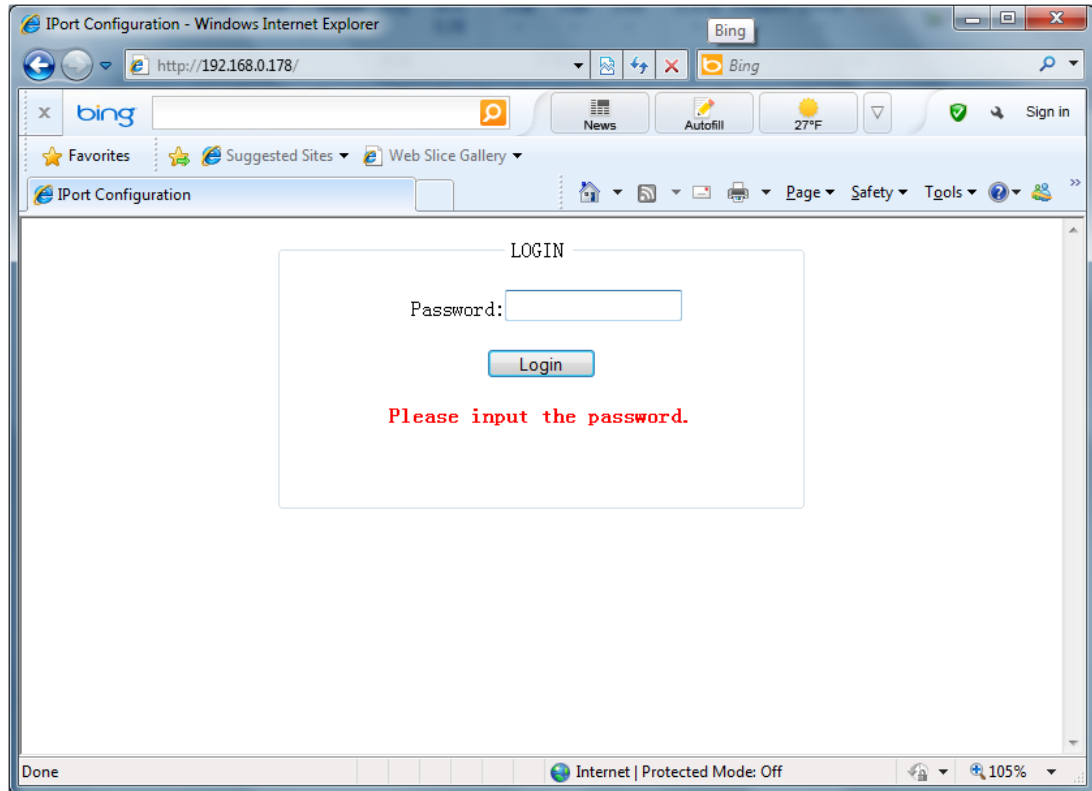
Specifying the TCP/IP settings

1. Connect a PC to the Ethernet network.
2. Connect the VSC-101tn to the Ethernet network.
The default IP address of the VSC-101tn is 192.168.0.178.
3. Set the IP address of the PC so that the network part of the address matches that of the VSC-101tn (192.168.0), but the machine part is different.

Note: You must not assign the same IP address to your PC and the VSC-101tn.

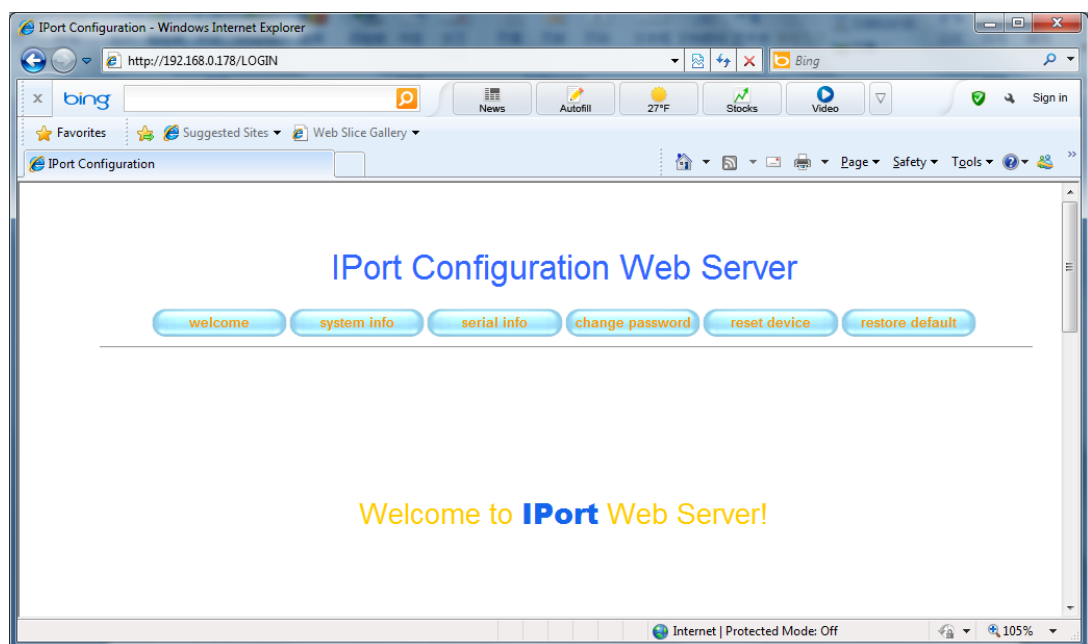


4. Open a browser and type `http://192.168.0.178` into the address bar to connect to the VSC-101tn.



5. In the **Password** box, type 88888 and press Enter.
The IPort Configuration Web Server page will be displayed. This allows you to set the IP address, password, and so on.

Note: Do not change the serial configuration options from the default, otherwise you may not be able to access the VSC-101tn via a serial connection.



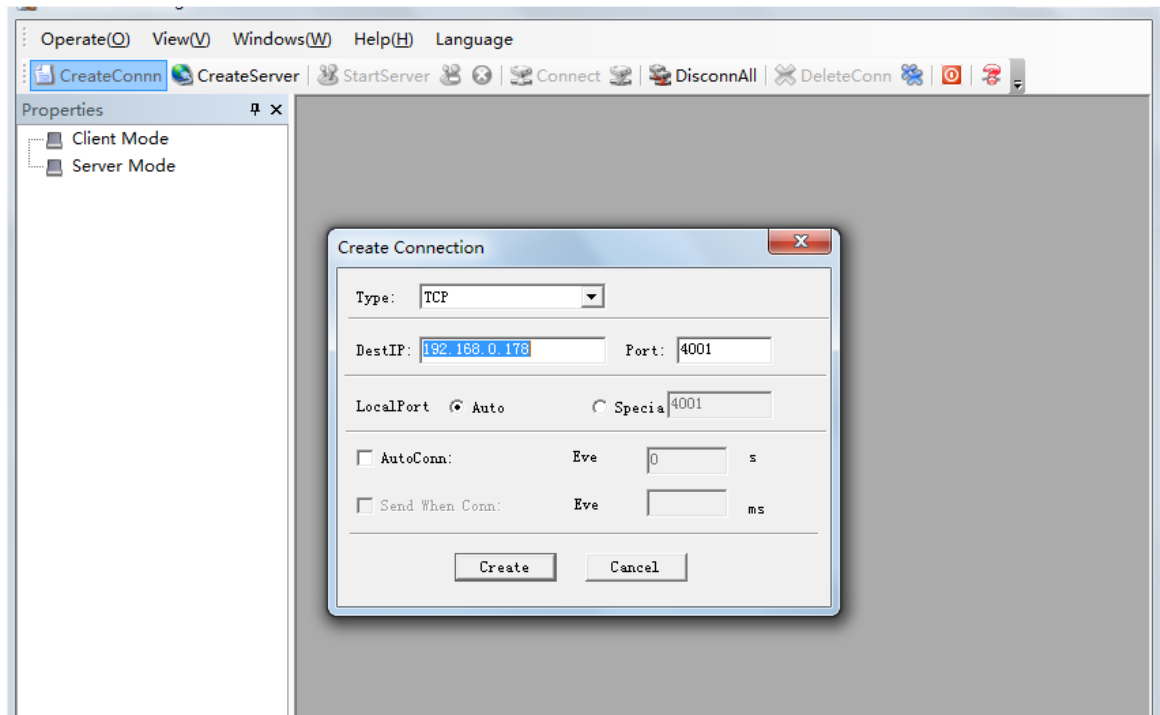
6. Set the IP address of the unit so that it matches the IP address scheme used on the network.

- Restart the VSC-101tn.
- Set the IP address of the PC so that it matches the IP address scheme used on the network.

Sending commands to the VSC-101tn via Telnet

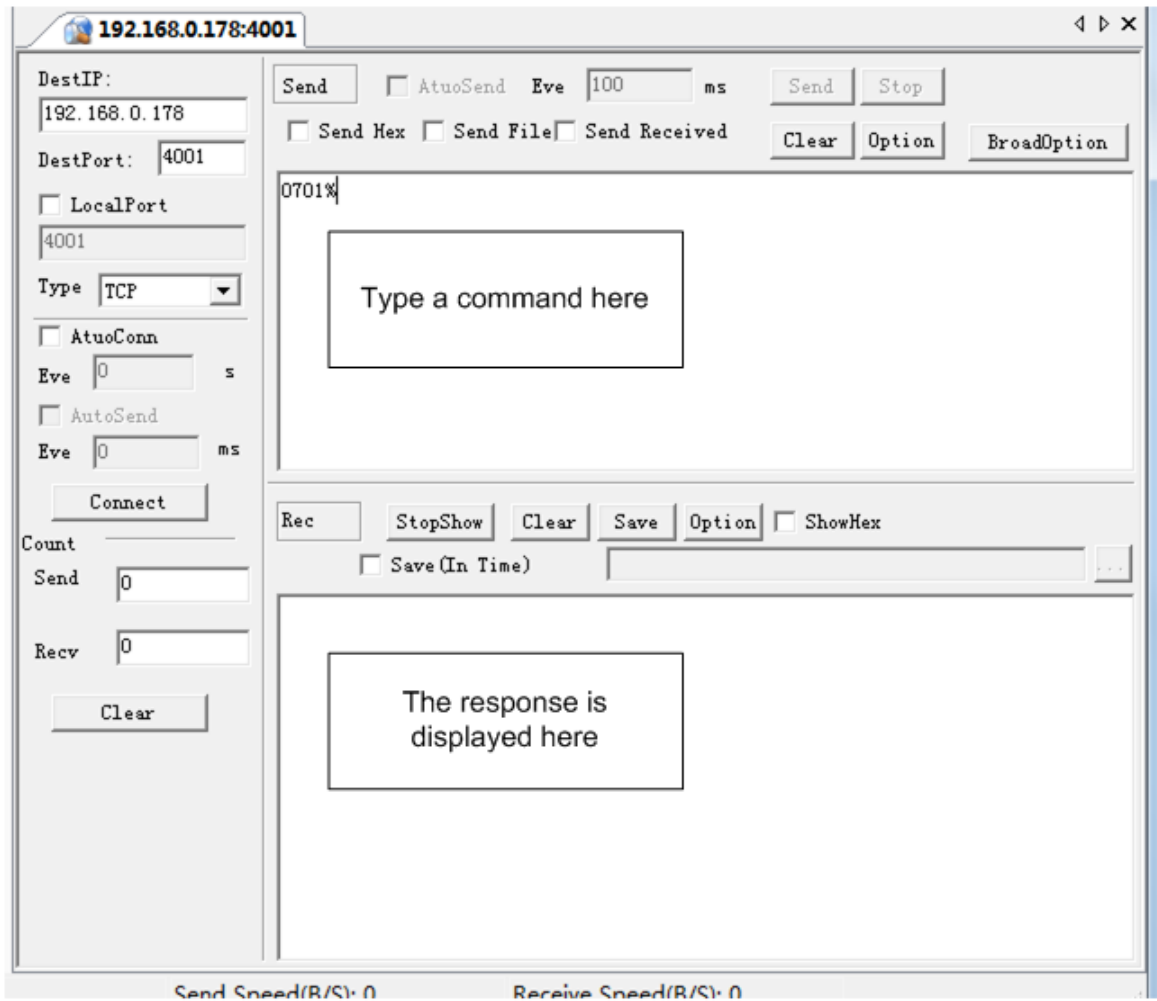
- Connect a PC and the VSC-101tn to the same network.
- Open a Telnet session and connect to the VSC-101tn.

The default IP address is 192.168.0.178. The default port is 4001.



- Once a connection has been made, type commands to control the VSC-101tn.

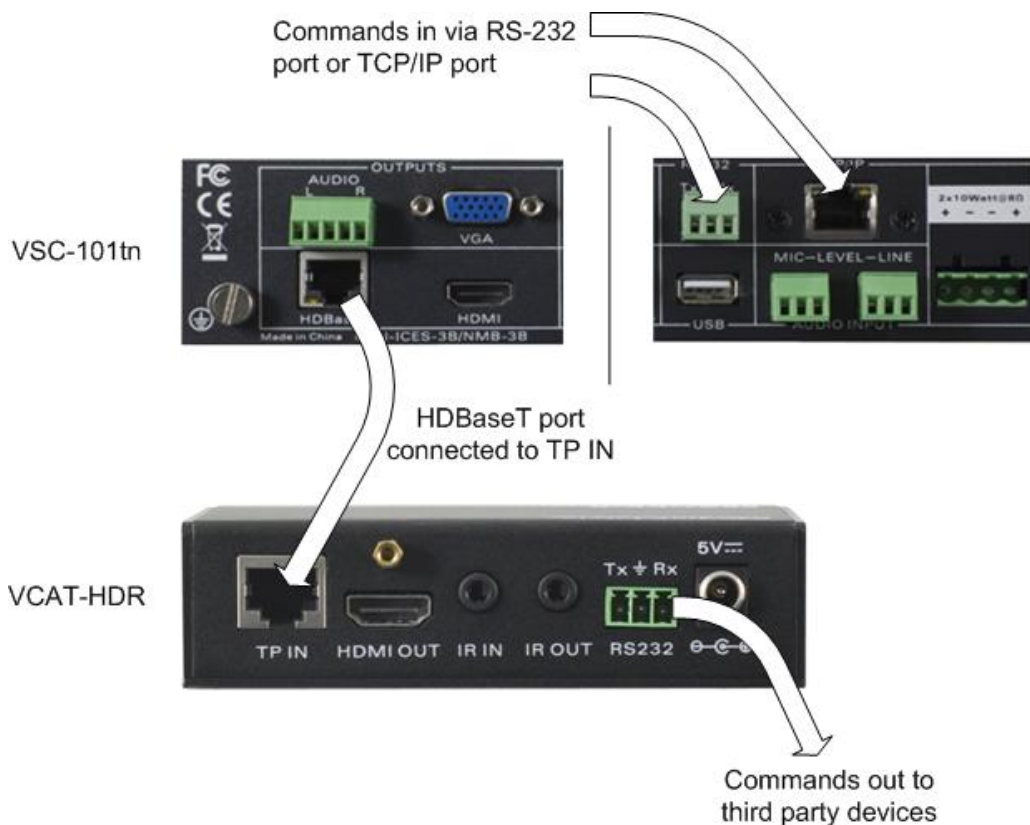
For information on the available commands, see *Communication protocol and command codes* (on page 22).



5 - Controlling third party devices

Introduction

The VSC-101tn can be used to control third party devices via a VCAT-HDR. The diagram below shows the connections required.



The VSC-101tn will pass all commands received via the RS-232 port and the Ethernet port out the HDBaseT port to the VCAT-HDR. These commands will be available at the RS-232 port of the VCAT-HDR for control of third party devices (projectors, monitors, and so on).

For information on installation and set up of the VCAT-HDR, refer to the *VCAT-HD Quick Set-Up Guide*.

Notes:

- Communications are limited to one direction. The VSC-101tn will not be able to receive commands via the VCAT-HDR.
 - The commands used by the third party device connected to the VCAT-HDR must not be valid for the VSC-101tn, otherwise conflicts will occur.
 - The IR IN port on the VCAT-HD does not function when the two units are connected. The IR signal is received from the VSC-101tn.
-

6 - Maintaining the unit

Updating the firmware

You can update the firmware on the VSC-101 and VSC-101tn products using a flash disk inserted into the USB port at the rear. *MediaMatrix Technical Support* (<mailto:mmtechsupport@peavey.com>) will provide you with the files you need to install on the flash disk and explain the procedure.

Tip: You can perform a firmware upgrade using buttons on the front panel and remote control, or via an RS-232 connection.

► To update the firmware

1. Copy the new firmware file *MT23ATV.bin* to a USB flash disk.
2. Plug the USB flash disk into the USB port.
3. Press and hold the HDMI button on the front panel for 6 seconds to start the firmware update procedure.
If you are using an RS-232 connection, send the command *0698%*.
4. On the remote control, press OK to confirm the update.
If you are using an RS-232 connection, send the command *0609%*.
5. After the update has finished, reboot the device to restore the factory default settings.
If you are using an RS-232 connection, send the command *0617%*.
6. Reboot the device again.
If you are using an RS-232 connection, send the command *0617%*.

Troubleshooting

Problem	What to do
No output image	Check if there is any signal at the input. Check if there is any signal at the output. You can check these using an oscilloscope or a multimeter.
Ghosting on image	This is generally is not a faulty switch/scaler, but may be caused by poor quality cabling (to or from the switch/scaler), or incorrect setup on the display. Check cables and their connections, as well as the display setup.

Problem	What to do
Waves on image	If the output image has waves, especially if the waves move up or down, check that all devices and components (video players, computers, etc.) are grounded properly.
Poor color saturation	Double-check the input and output connections of all cables. Check for bent pins on VGA cables.
Static or waves become stronger when connecting using RCA connectors	Possibly due to incorrect grounding. Check grounding immediately. This could cause damage to the VSC device.
Remote control not working	Check that the batteries are inserted correctly. Check that the batteries are charged. Replace batteries as necessary.
RS-232 control not working	Check that the baud rate on the VSC device matches the baud rate set on the connected device. When a computer is being used, check that the COM port set on the computer matches the COM port set in the OSD on the VSC device. Make sure the serial port is in good working condition. Try swapping the TX and RX at one one.
Power LED unlit	Make sure the power cord connection is good, and that the adapter (if used) is working. Make sure that there is power at the outlet.
Device does not respond when buttons are pressed on the front, when the remote control is used or when RS-232 communications are active.	The VSC device may need repair. Contact your dealer.
HDMI output works properly, but VGA does not work.	HDCP is blocking video content from any analog (VGA) outputs. This can happen when playing back Blu-ray content. This can be confirmed by opening the OSD. Make certain the VGA monitor can display the resolution being used.
Network control not working	Confirm that the IP address and port number are correct.

7 - Reference information

Specification

Video input		Video output	
Input	4 HDMI, 4 VGA, 1 YPbPr, 2 C-Video, 1 S-Video	Output	1 HDMI, 1 VGA, 1 HDBaseT
Input connectors	HDMI female connector, VGA(15 pin HD), RCA female connector, S-Video connector	Output connectors	HDMI female connector, VGA(15 pin HD), RJ-45 connection (for HDBaseT)
Video signal	HDMI 1.3, RGBHV, RGBs, RGsB, RsBsGs, NTSC 3.58, NTSC 4.42, PAL, SECAM	Video signal	HDMI 1.3, VGA, HD Base-T
Video General			
Resolution range	1920 x 1080 (1080P), 1360 x 768, 1280 x 720 (720P) 1280 x 800, 1024 x 768.	Bandwidth	HDMI: 4.95Gbps (1.65Gbps per color), C-Video/S-Video: 150MHz, YPbPr: 170MHz, VGA: 375MHz
Maximum pixel clock	145MHz	Video impedance	75Ω
Gain	0dB	I/O level	0.5V~2.0Vp-p
HDCP management	Compliant with High-bandwidth Digital Content Protection(HDCP) with DVI & HDMI 1.3 standards		

Audio input		Audio output	
Input	6 Stereo analog inputs for audio follow video 1 Stereo Left/Right audio input 1 Balanced mic-level audio input	Output	Balanced stereo audio output, 2x10W@8Ω/amplifier
Input connector	4 RCA female connector for YPbPr, C-Video & S-Video audio 4 3.5mm jack for VGA audio HDMI for HDMI embedded audio	Output connector	Left/Right 5-pin Euro-connector Amplifier Euro-connector
Input impedance	>10kΩ	Output impedance	50Ω
Audio general			
Frequency response	20Hz~20K Hz	Stereo channel separation	>80dB @ 1KHz
CMRR	>90dB @20Hz to 20K Hz		
Control			
Control/Remote	IR remote, Front panel Buttons & RS-232, TCP/IP	Serial RS-232 Pin Configuration	Euro-connector
General			
Temperature	-20 ~ +70°C	Humidity	10% ~ 90%
Power supply	100VAC ~ 240VAC, 50/60Hz	Power consumption	65W
Case dimension	W483 x H44 x D235mm	Product weight	2.1Kg

Supported video formats

The device supports many types of video signals, including C-Video, S-Video, YPbPr, VGA and HDMI. All inputs are scaled to the selected HDMI format output.

C-Video and S-Video input

- Supports PAL, SECAM and NTSC formats.
- From the OSD, the aspect ratio can be set to full-screen, wide screen or 4:3.
- Color RGB adjustable.

YPbPr input

The aspect ratio can be set to full-screen, wide screen or 4:3. There is also an auto-adjust feature. HDTV input is supported.

The maximum bandwidth is 170MHz.

Input resolution	Display parameter				
	Frame mapping	Scanning lines	Frame frequency	Refresh rate Hz	Aspect ratio
720 x 480 I	2:1	525	15.75	60	4:3
720 x 480 P	1:1	525	31.5	60	4:3
720 x 576 I	2:1	625	15.625	50	4:3
720 x 576 P	1:1	625	31.25	50	4:3
1280 x 720 P	1:1	750	45	60	16:9
1280 x 720 P	1:1	750	37.50	50	16:9
1920×1080 I	2:1	1125	28.125	50	16:9
1920×1080 I	2:1	1125	33.75	60	16:9
1920×1080 I	2:1	1250	31.25	50	16:9
1920×1080 P	1:1	1250	62.5	50	16:9
1920×1080 P	1:1	1250	67.5	60	16:9

VGA input

The VGA resolution is VESA standard. The following resolutions are supported.

The maximum bandwidth is 375MHz (-3dB). The aspect ratio can be changed between full screen and 4:3. The audio bass and treble can be adjusted.

No.	Resolution	No.	Resolution
1	640×480@60Hz	8	1024×768@70Hz
2	640×480@72Hz	9	1024×768@75Hz
3	720×400@70Hz	10	1280×1024@75Hz
4	800×600@60Hz	11	1280×768@60Hz
5	800×600@72Hz	12	1360×768@60Hz
6	800×600@75Hz	13	1920×1080@60Hz
7	1024×768@60Hz		

HDMI input

HDMI features:

- Digital embedded audio decoding, passing the stereo analog audio balanced outputs on Euro-connectors.
- Changeable aspect ratio (full-screen, wide screen, 4:3, auto-adjust).
- Support for HDCP1.3, compatible with DVI signal.

No.	Resolution	No.	Resolution
1	640×480@60Hz	9	1024×768@70Hz
2	640×480@72Hz	10	1024×768@75Hz
3	640×480@75Hz	11	1280×1024@75Hz
4	800×600@56Hz	12	1360×768@60Hz
5	800×600@60Hz	13	1920x540
6	800×600@72Hz	14	1920x1080I@(50Hz/60Hz)
7	800×600@75Hz	15	1920x1080P@(50Hz/60Hz/24Hz/30Hz)
8	1024×768@60Hz		

Audio input/output

Switched (audio follows video) inputs

- 4 x VGA audio 3.5mm (1/8) stereo inputs.
- 4 x HDMI embedded audio.
- 2 x RCA stereo audio inputs.

Non-switched (always on) inputs

- 1 x Balanced MIC level audio input (Euro-connector).
- 1 x Left/Right stereo audio input (Euro-connector).

Outputs

- 2x10W@8Ω amplifier output.
 - Volume/Bass/Treble adjustable.
 - Audio status presets, changeable audio scenes.
- Balanced left/right output (Euro-connector).

Communication protocol and command codes

Command	Function Description	Feedback Example
0600%	MUTE Line	LINE Mute On
0601%	UnMute Line	LINE Mute Off
0602%	Master audio up	LINE Volume: XX
0603%	Master audio down	LINE Volume: XX
0604%	Lock the front panel buttons	Panel Locked
0605%	Unlock the front panel buttons	Panel UnLocked
01XX%	Preset the volume. The XX range is from 00 to 99	Volume: XX
02XX%	Preset the brightness. The XX range is from 00 to 99	Brightness: XX
03XX%	Preset the contrast. The XX range is from 00 to 99	Contrast: XX
04XX%	Preset the saturation. The XX range is from 00 to 99	Saturation: XX
05XX%	Preset the sharpness. The XX range is from 00 to 07	Sharpness: XX

Command	Function Description	Feedback Example
0606%	Auto-adjust the input signal(VGA only)	VGA Adjustment
0607%	Auto-adjust the color temperature	Color Temp: XX
0608%	ZOOM the image, set the aspect ratio	Aspect Ratio: XX
0609%	OK, for OSD selection	OK
0610%	OSD: Left	Left
0611%	OSD: Right	Right
0612%	OSD: Up	Up
0613%	OSD: Down	Down
0614%	Set picture mode	Picture Mode : XX
0615%	Set Sound Mode	Sound Mode: XX
0616%	OSD: Menu	MENU
0617%	Command to reset to factory defaults	Factory reset
0618%	Change the resolution to 1360X768 HD	Resolution: HD 1360X768
0626%	Change the resolution to 1024X768 XGA	Resolution: XGA 1024X768
0627%	Change the resolution to 1280X720 720P	Resolution: 720P 1280X720
0628%	Change the resolution to 1280X800 WXGA	Resolution: WXGA 1280X800
0629%	Change the resolution to 1920X1080 1080P	Resolution: 1080P 1920X1080
0630%	Check the volume level	LINE Volume: XX/MIC Volume: XX
0631%	Check the input source	Source: XXXXXX
0632%	Check the output resolution	Resolution: XXXXXXXX
0633%	Check the image mode	Picture Mode : XX
0634%	Check the audio mode	Sound Mode: XX

Command	Function Description	Feedback Example
0635%	Check the image aspect ratio	Aspect Ratio: XX
0636%	Check the brightness	Brightness: XX
0637%	Check the contrast	Contrast: XX
0638%	Check the saturation	Saturation: XX
0639%	Check the sharpness	Sharpness: XX
0640%	Check the color temperature	Color Temp: XX
0644%	OSD CHANNEL display enable	OSD Source: Display
0645%	OSD CHANNEL display disable	OSD Channel (Source): No Display
0646%	Volume Bar display enable	Volume Bar: Display
0647%	Volume Bar display disable	Volume Bar: No Display
0648%	Digital audio (HDMI) output enable	Digital Sound Output: Enable
0649%	Digital audio (HDMI) output disable	Digital Sound Output: Disable
0650%	Check OSD CHANNEL display status	OSD Source: Display
0651%	Check Volume Bar display status	Volume Bar: Display
0652%	Check Digital audio output status	Digital Sound Output: Enable
0655%	Freeze output image	Freeze: Enable
0656%	Unfreeze output image	Freeze: Disable
0698%	Firmware update	
0701%	Switch to HDMI1 input	Source: HDMI 1
0702%	Switch to HDMI2 input	Source: HDMI 2
0703%	Switch to HDMI3 input	Source: HDMI 3
0704%	Switch to HDMI4 input	Source: HDMI 4
0705%	Switch to VGA1 input	Source: VGA1
0706%	Switch to VGA2 input	Source: VGA2
0707%	Switch to VGA3 input	Source: VGA3

Command	Function Description	Feedback Example
0708%	Switch to VGA4 input	Source: VGA4
0709%	Switch to composite video AV1 input	Source: CVIDEO1
0710%	Switch to YPbPr input	Source: YPbPr
0711%	Switch to S-Video input	Source: SVIDEO
0712%	Switch to composite video AV2 input	Source: CVIDEO2
0720%	Mute Line and MIC	Mute On
0721%	UnMute Line and MIC	Mute Off
0722%	MUTE MIC	MIC Mute On
0723%	UnMute MIC	MIC Mute Off
0724%	MIC volume turn up	MIC Volume: XX
0725%	MIC volume turn down	MIC Volume: XX
08XX%	Preset MIC volume	MIC Volume: XX

Warranty statement

MediaMatrix®
PEAVEY ELECTRONICS CORPORATION
DOMESTIC (USA) LIMITED WARRANTY
Effective Date: May 1, 2005

What This Warranty Covers

This Warranty covers defects in material and workmanship in Peavey MediaMatrix products purchased and serviced in the United States of America (USA).

What This Warranty Does Not Cover

The Warranty does not cover: (1) damage caused by accident, misuse, abuse, improper installation or operation, rental, product modification or neglect; (2) damage occurring during shipment; (3) damage caused by repair or service performed by persons not authorized by Peavey; (4) products on which the serial number has been altered, defaced or removed; (5) products not purchased from an Authorized MediaMatrix Integrator. This warranty does not cover associated costs incurred from servicing equipment, including, but not limited to, travel, jobsite-related costs, fabrication, freight, loaner equipment, installation, cabling or harnessing, mounting materials or other variable costs.

Who This Warranty Protects

In applications where the product is sold *over the counter*, this Warranty protects the original retail purchaser. In applications where the product is part of an integrated system, and such system is warranted by the integrator as a complete assembly, this Warranty protects only the system integrator.

What Peavey Will Do

We will repair or replace (at Peavey's discretion) products covered by warranty at no charge for labor or materials. If the product or component must be shipped to Peavey for warranty service, the consumer must pay initial shipping costs. If the repairs are covered by warranty, Peavey will pay the return shipping costs.

How Long This Warranty Lasts

The Warranty begins on the date of purchase by the original retail purchaser or on the date received by the system integrator. (See *Who This Warranty Protects*, above). The duration of the Warranty varies by product as summarized below.

5 Years	MediaMatrix® DPU cards, NION™ Processing Nodes, CABs, I/O cards, Cinema Processors, Power Amplifiers, Pre-Amplifiers, Mixers, Electronic Filter Sets and Dynamics Processors.
1 Year	MM Series Cardframes, MF Series Cardframes, ControlMatrix™ Host Processors, Servers and Controllers, nControl, nTouch 180, nTouch 60, xControl LCDs, nWall, VCAT, VCAT-HD, VGA-2, VSC, D4S, D1V, Remote Control Panels, Plates, Paging Stations, Ambient Sense Devices and other devices installed in user-accessible locations.
90 Days	Loudspeaker Components (including speakers, baskets, drivers, diaphragm replacement kits and

passive filter networks.) and all Accessory Products

How To Get Warranty Service

End Users: Take the defective product and your dated sales receipt or other proof of purchase to your Authorized MediaMatrix Systems Integrator or Authorized Peavey Service Center. System Integrators: Ship the defective product, prepaid, to Peavey Electronics Corporation, International Service Center, 412 Highway 11 & 80 East, Meridian, MS 39301, 601-483-5365. Include a detailed description of the problem, the name and location of the jobsite and a copy of your invoice as evidence of warranty coverage. Please include a complete return shipping address.

Limitation of Implied Warranties

ANY IMPLIED WARRANTIES, INCLUDING WARRANTIES OF MERCHANTABILITY AND FITNESS FOR A PARTICULAR PURPOSE, ARE LIMITED IN DURATION TO THE LENGTH OF THIS WARRANTY.

Some states do not allow limitations on how long an implied warranty lasts, so the above limitation may not apply to you.

Exclusions of Damages

PEAVEY'S LIABILITY FOR ANY DEFECTIVE PRODUCT IS LIMITED TO THE REPAIR OR REPLACEMENT OF THE PRODUCT, AT PEAVEY'S OPTION. IF WE ELECT TO REPLACE THE PRODUCT, THE REPLACEMENT MAY BE A RECONDITIONED UNIT. PEAVEY SHALL NOT BE LIABLE FOR DAMAGES BASED ON INCONVENIENCE, LOSS OF USE, LOST PROFITS, LOST SAVINGS, DAMAGE TO ANY OTHER EQUIPMENT OR OTHER ITEMS AT THE SITE OF USE, OR ANY OTHER DAMAGES WHETHER INCIDENTAL, CONSEQUENTIAL OR OTHERWISE, EVEN IF PEAVEY HAS BEEN ADVISED OF THE POSSIBILITY OF SUCH DAMAGES.

Some states do not allow the exclusion or limitation of incidental or consequential damages, so the above limitation or exclusion may not apply to you. This Warranty gives you specific legal rights, and you may also have other rights which vary from state to state. If you have any questions about this warranty or service received, or if you need assistance in locating an Authorized Service Center, please contact the Peavey International Service Center at (601) 483-5365. Features and specifications subject to change without notice.

MediaMatrix®

A Division of Peavey Electronics Corporation



MediaMatrix®

A Division of Peavey Electronics Corp.

5022 Hartley Peavey Drive, Meridian Mississippi, 39305, USA

Phone: 866.662.8750

<http://www.peaveycommercialaudio.com/products.cfm/mm/>

Features & Specifications subject to change without notice

Copyright © 2016, All Rights Reserved

80305813